

DVB-TV DVB-Data

User's Manual Ver.1.8

Table of Contents

Chapter 1 DVB-TV DVB-Data Introduction.....	2
Chapter 2 Installation Introduction.....	4
2.1 Hardware Installation.....	5
2.2 Software Installation	6
Chapter 3 System Configuration and Setup	11

CHAPTER 1

DVB-TV DVB-Data Introduction

Chapter 1 DVB-TV DVB-Data Introduction

1.1 Introduction

DVB-TV DVB-Data is a program to let you receive data or connect to internet via satellite. But you still need 3rd party application program to process the data. DVB-Data just let you to filter the stream and get specific data.

1.2 System requirements

- IBM or IBM compatible computer
- OS: Windows 98SE/ME/2000/XP
- CPU: 500 MHz or better
- Memory: 128MB or more
- VGA card with at least 8 MB Memory
- Microsoft DirectX 8.1 or above
- Digital Satellite Dish & LNB

CHAPTER 2

Installation Introduction

This chapter tells how to install DVB-TV

DVB-Data in hardware and software with the
easiest way!!

Sections include :

- Hardware installation
- Software installation

Chapter 2 Installation Introduction

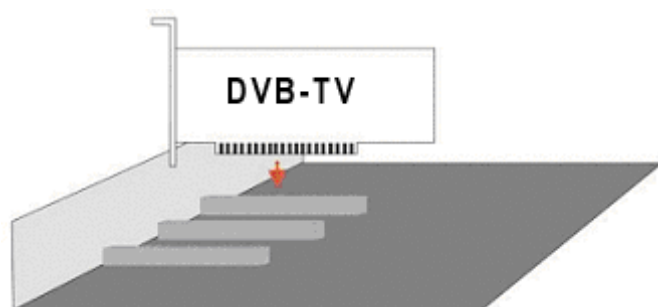
2.1 Hardware Installation

Before You Begin

- Make sure your computer system meet the system requirements
- Make sure the computer and all related equipments are power off
- Please note that DVB-TV card can't be inserted with the analog TV tuner card at the same system. Please remove the analog TV tuner card or other PCI card that with Conexant BT878 on board and their drivers before install DVB-TV card.

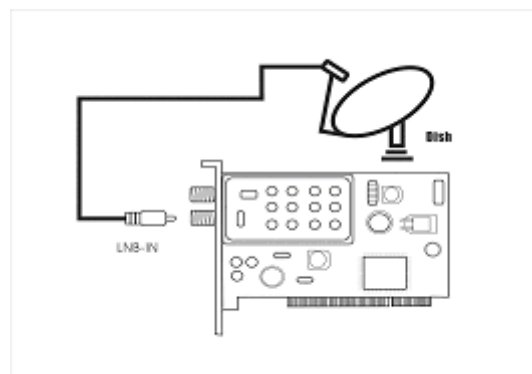
Step1: Insert DVB-TV Sat/ Sat-CI Card

- Remove the cover of the slot you intend to use and unscrew the mounting bracket
- Pick up the DVB-TV Sat Card and position it over the expansion slot you have chosen
- Push the card firmly and evenly, confirm it seated in the slot entirely
Screw the bracket of the DVB-TV Sat Card onto the computer chassis



Step2: Cable Connection

- Make sure the cable correctly connected with LNB from the satellite dish
- Connect the cable to the LNB-in connector and fasten the plug



2.2 Software Installation

Software Installation includes “Drivers Installation” and “Application Software(DVB-Data) Installation”. Please follow the instructions below.

Before You Begin

- **If you want to install both DVB-Data and DVB-TV application program in the same PC, be sure to install DVB-TV application program in advance.**
- Make sure that DVB-TV Card is physically installed (For more information please refer to Hardware Installation described in last chapter).
- Turn on your computer

Driver Installation

1. After finishing the “Hardware Installation” and turn on the computer, Windows will find 2 New Hardware – **Multimedia Video Controller** and **Multimedia Control**. Please choose “Cancel” of pop up windows, we will install the drivers later by the DVB-Data program automatically.

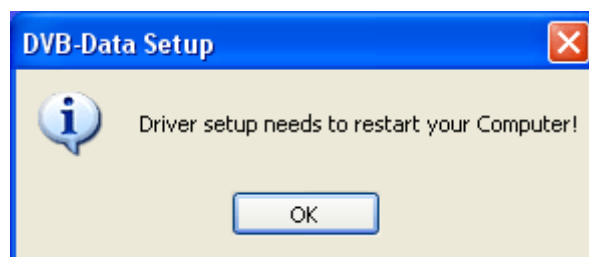


2. Enter the DVB-Data folder and launch “setup.exe”.
3. Just click “Continue Anyway” if you see the following windows.



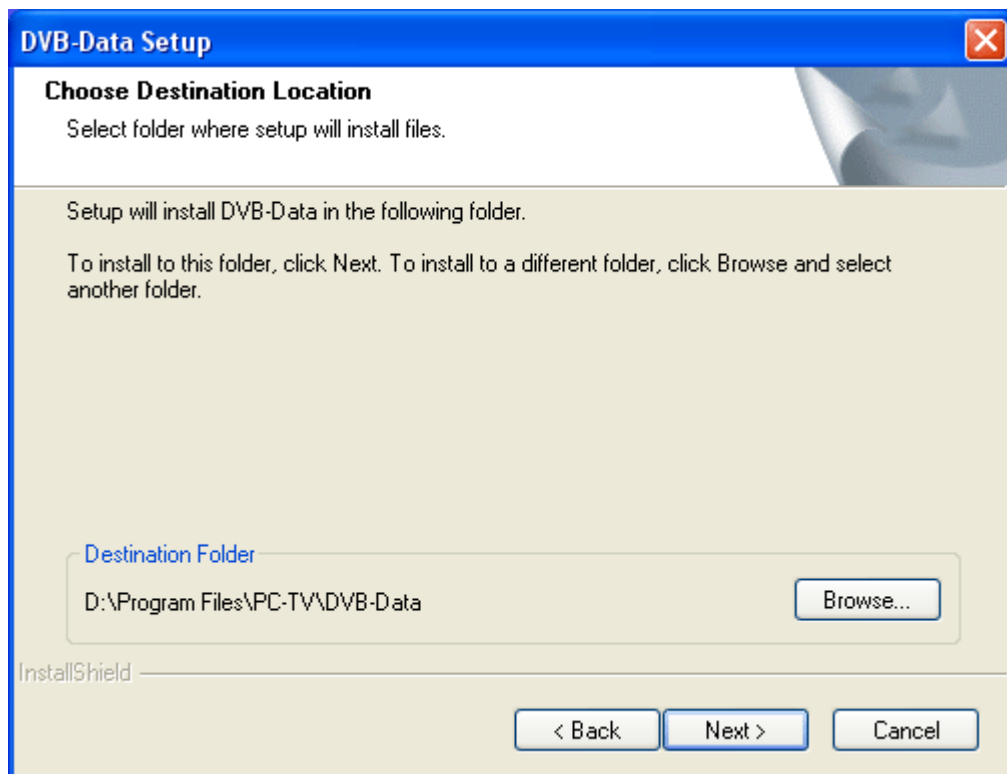
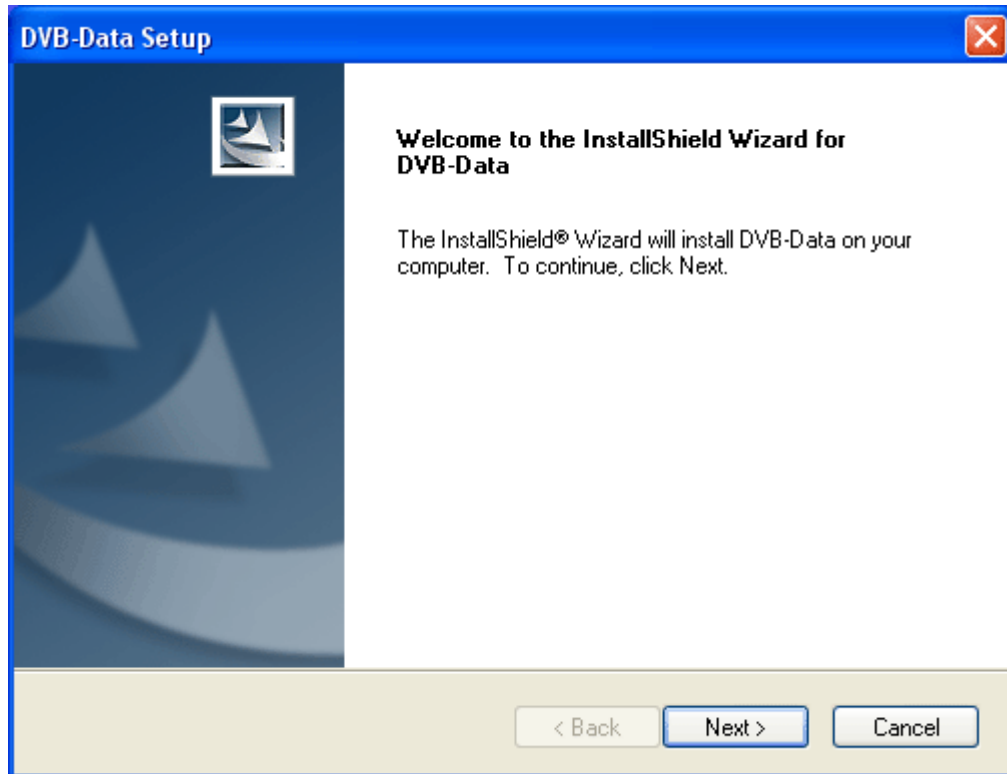


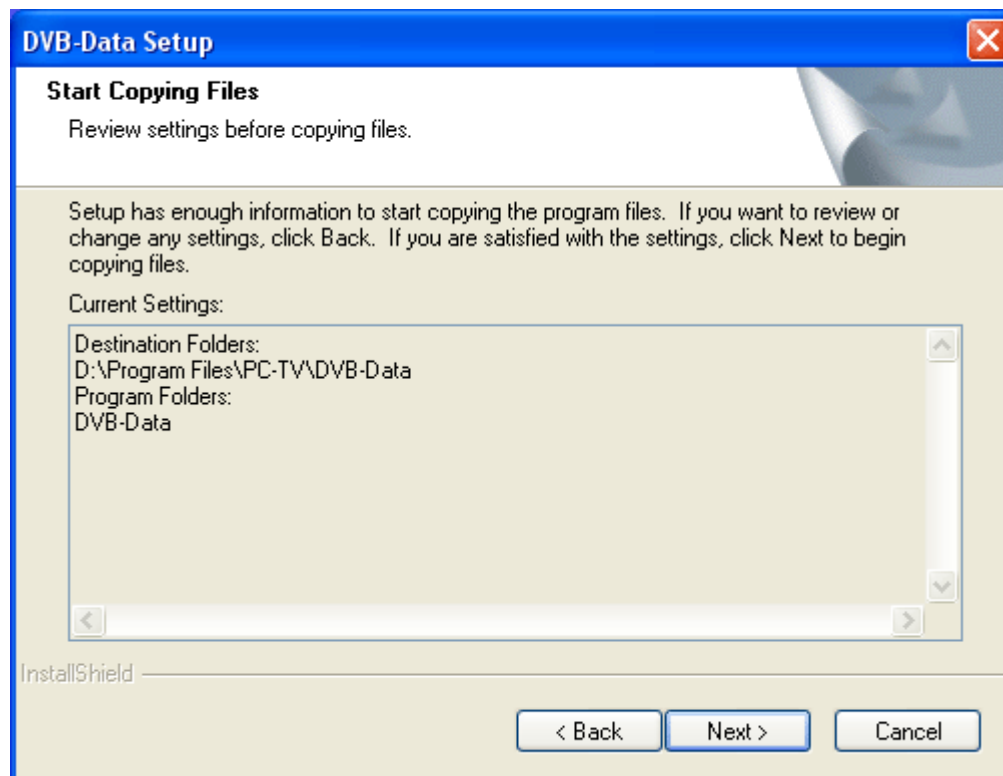
4. Drivers are already installed once you see the following window. Just click ok to restart your computer, and DVB-Data will be installed automatically after restarting.



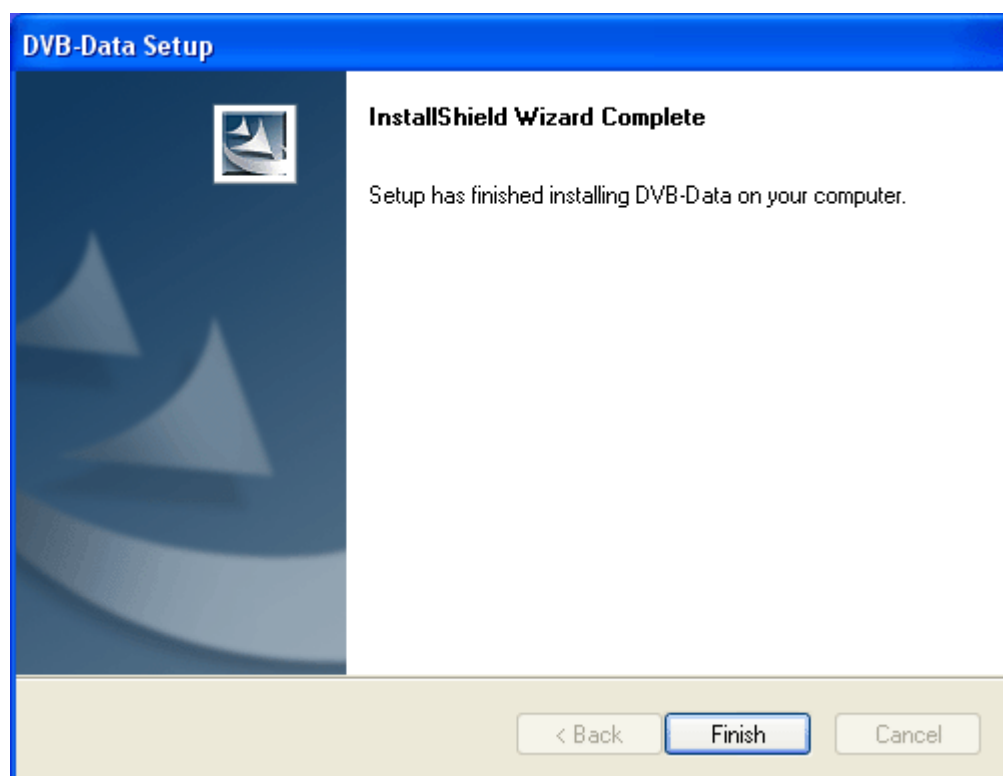
Application Software (DVB-Data) Installation

1. The “DVB-Data Install shield Wizard” will be launched automatically. Please follow the procedures.
2. Follow the steps.





3. It's finished when you see the window.



Click at the icon on the desktop to start DVB-Data application program.



DVB-Data

CHAPTER 3

DVB-Data System Setup

This chapter describes how to set all the parameters of the system in detail, and lists all the knowledge you need to set up a Digital Satellite TV system.

Chapter 3 System Configuration and Setup

Before you start to setup DVB-Data

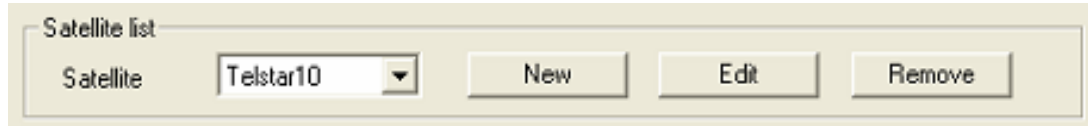
To setup DVB-Data system, please collect the following information.

1. Dish type : Fixed, DiSEqC 1.2 motor, or USALS motor ?
2. Do you have a LNB switch ? If you do, then which LNB of dish aim at the satellite you would like to setup DVB-Data?
3. Which type of LNB do you have ? Normally it's universal in Europe.
4. Transponder Info : You need to know the transponder information which you would like to lock the data stream. The information includes a. Frequency, b. Symbol Rate, c. Polarization.
5. PID Info : The PID of data you would like DVB-Data to filter. For the item 4&5 you should get the information from your content provider or ISP.

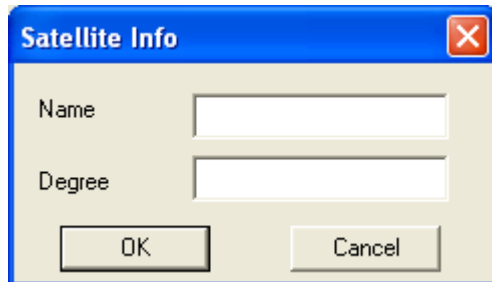
DVB-Data System Setup

Step1 : Create a satellite profile.

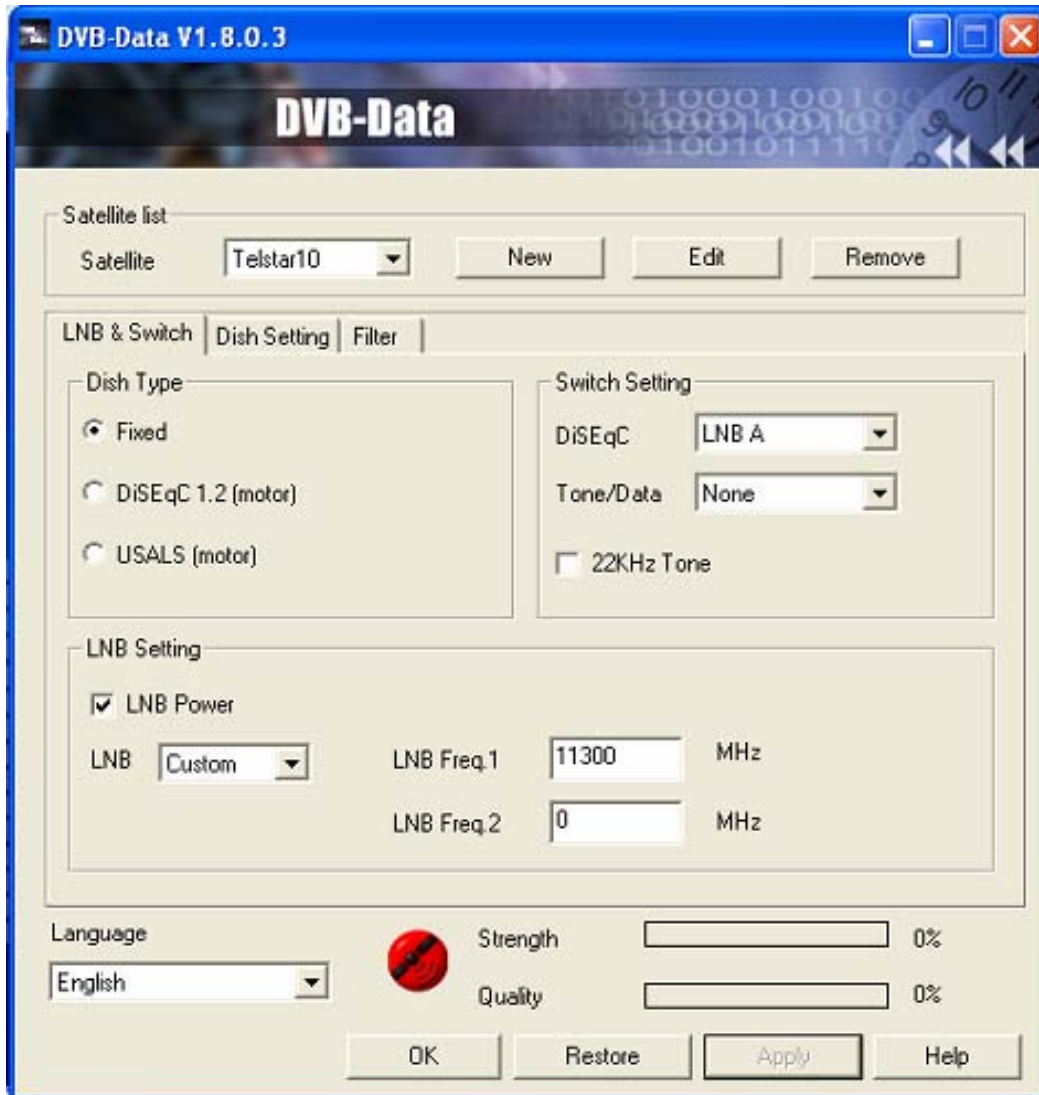
a. Click at “New” to add the satellite you would like to configure.



b. Enter the name and degree of the satellite you would like to configure.



Step2 : LNB & Switch setup



a. Dish Type :

Choose the proper type of your dish. If you don't know which type your dish is, just choose "Fixed". It will not affect DVB Data's setting.

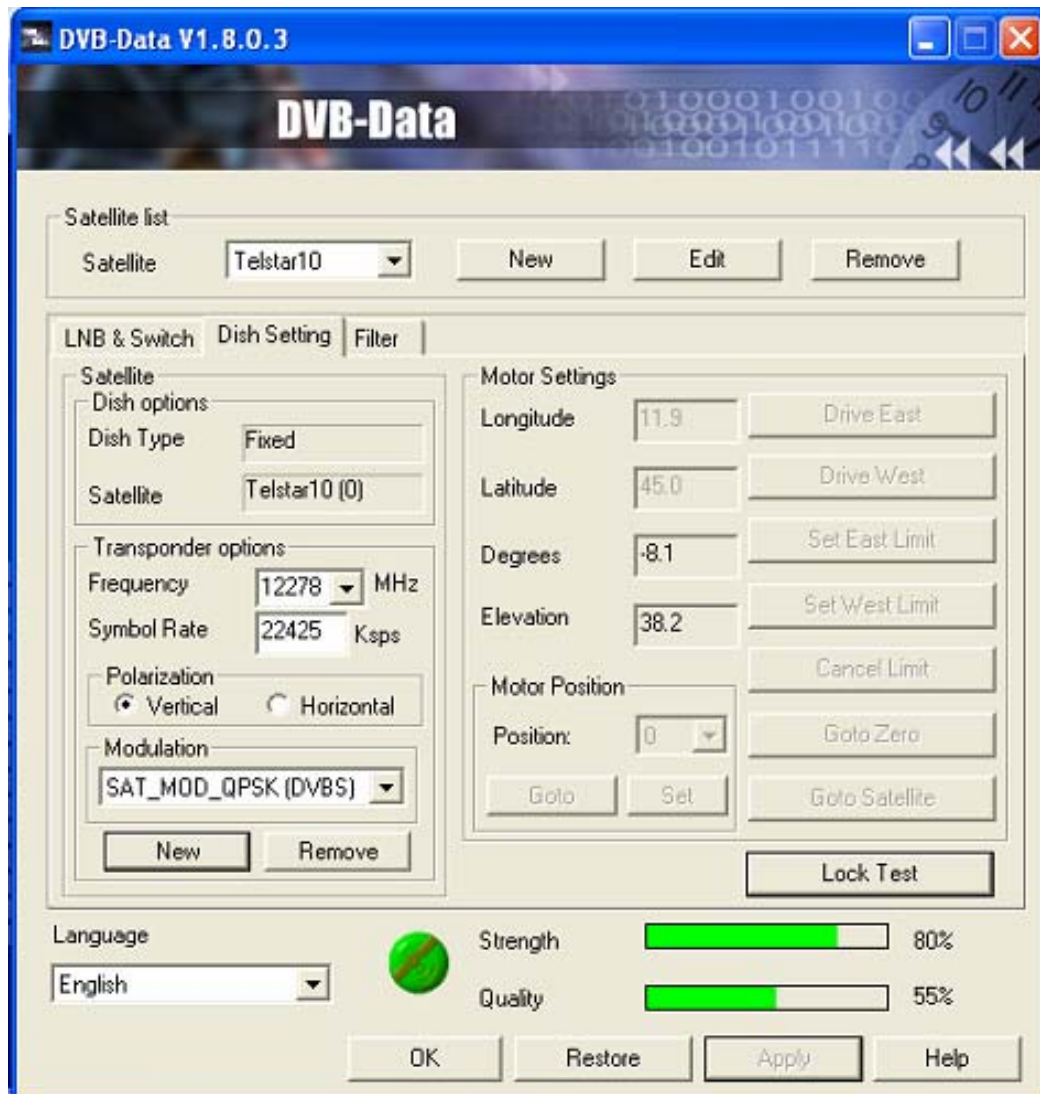
b. Switch Setting :

If you have no LNB switch and connect the antenna with DVB-TV card directly, please choose "Disable". Otherwise please choose the proper LNB.

c. LNB Setting.

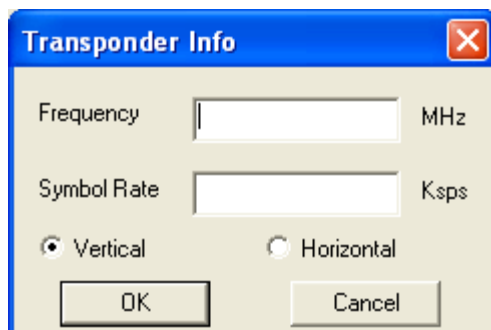
Be sure to tick the "LNB Power" to enable the LNB. And for the type of LNB, if you locate in Europe then its must be "Universal". Otherwise please contact your LNB provider.

Step3 : Dish Setting



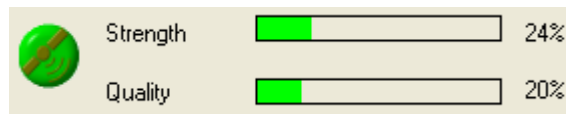
Change the page to “Dish Setting”.

- Click at “New” to add the transponder you would like to lock and receive the data stream.
- Enter the value of “Frequency”, “Symbol Rate”, “Polarization (Vertical or Horizontal)” and click at “OK”.

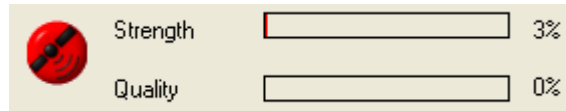


c. Click at “Lock Test” to test if you could lock the data stream of transponder. The green bars mean the setting is correct and you could lock the transponder. And if you get red bars or none, please check your setting again.

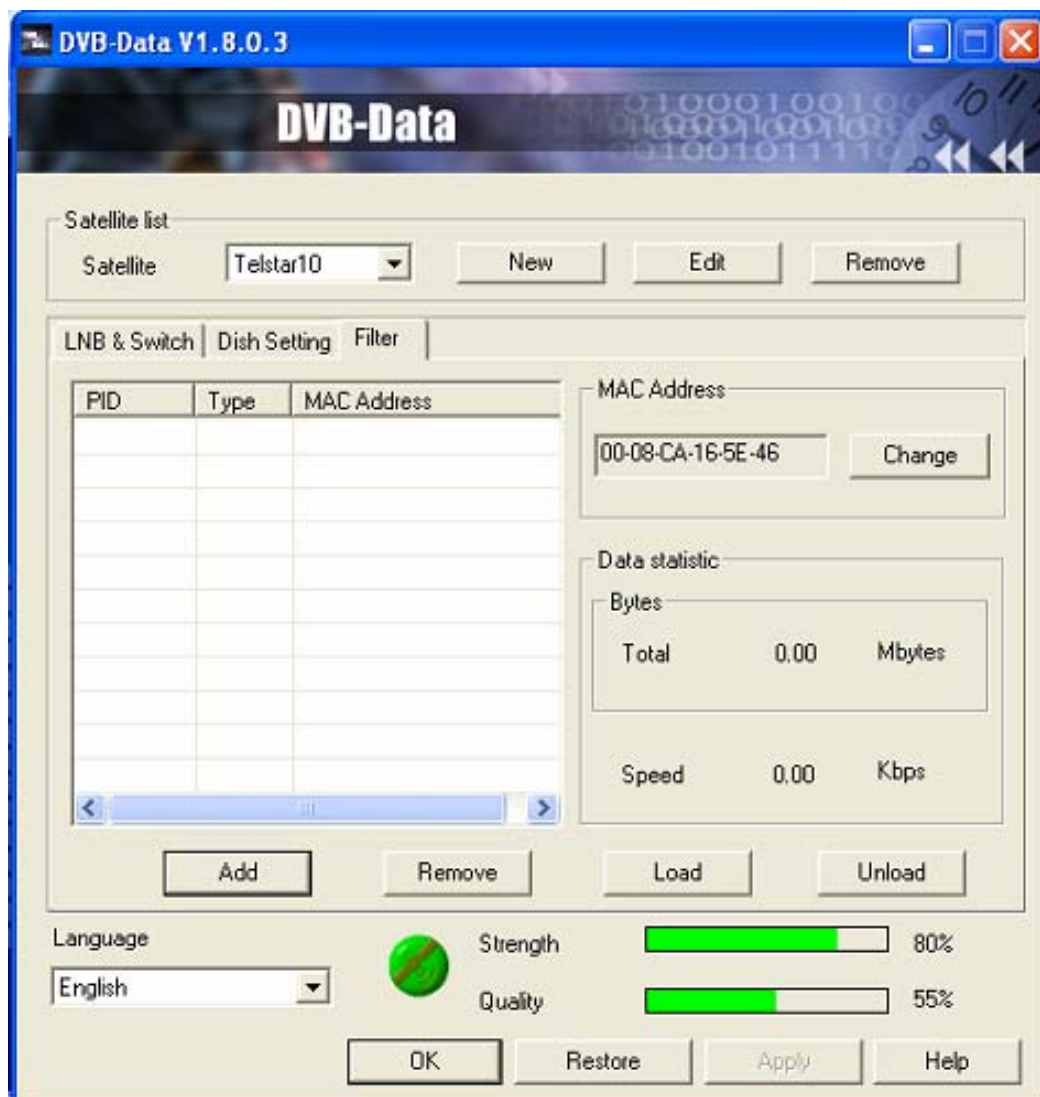
Correct →



Wrong →

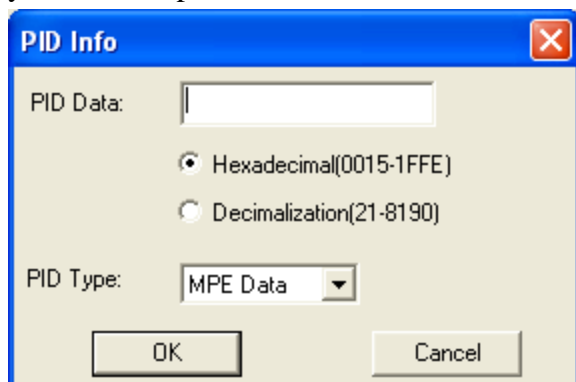


Step4 : Filter



Change the page to “Filter”.

- Click at “Add” to add “PID” you would like the data stream to be filtered.
- Enter the PID information and click “OK”. If you have no idea what to input please contact your content provider or ISP.



Step5 :

Click at “Apply” and “OK” to finish the configuration and exit.